

Rotule SI

SI30M27X2-T-K-DURBAL - SI30M27X2-T-K-DURBAL

<https://www.123roulement.be/roulement-palier/rotule/si/si30m27x2-t-k-durbal>

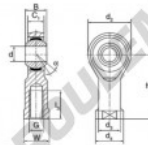
SI30M27X2-T-K



female thread:
maintenance free,
according to
DIN ISO 12240-4,
series K



Description: DIN ISO rod end K series. Made of spherical plain bearing DG...PW pressed into rod end body. Sliding combination steel / bronze-PTFE composite.



Rod end body:
surface zinc plated

Sliding combination:
steel / bronze-PTFE composite

Inner ring:
bearing steel, hardened, ground and
spherical surface chromium plated

Outer ring:
brass body pressed around, outer race
lined with bronze-PTFE composite

Lubrication:
maintenance free

order number		measurement [mm]						
right hand thread	left hand thread	d	G	B	C ₁	d ₂	d ₃	d ₄
SI 30 TIK M 27 x 2		30	M 27 x 2	37	25,00	70	40,0	50

type	measurement [mm]			load rating C ₁₀ [N]	weight [kg]
	l ₃ min	W	h		
SI / SIL 30 TIK M 27 x 2	51	41	110	17	114,0

CARACTÉRISTIQUES PRODUIT

Marque	DURBAL
N° Ean13	3663952489766
Diam. intérieur	30 mm
Diam. extérieur	70 mm
Epaisseur	37 mm
Type	SI
Poids	1100 g
Filetage	Filetage à droite
Lubrification	sans
Conditionnement	1

contact@123roulement.be

02 808 18 02

CRT4 de Lesquin 60 Rue Du Haut De Sainghin 59273 Fretin FRANCE